



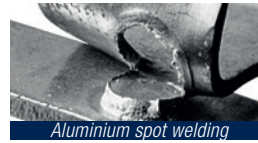
GeniusHWI

HARMS+WENDE

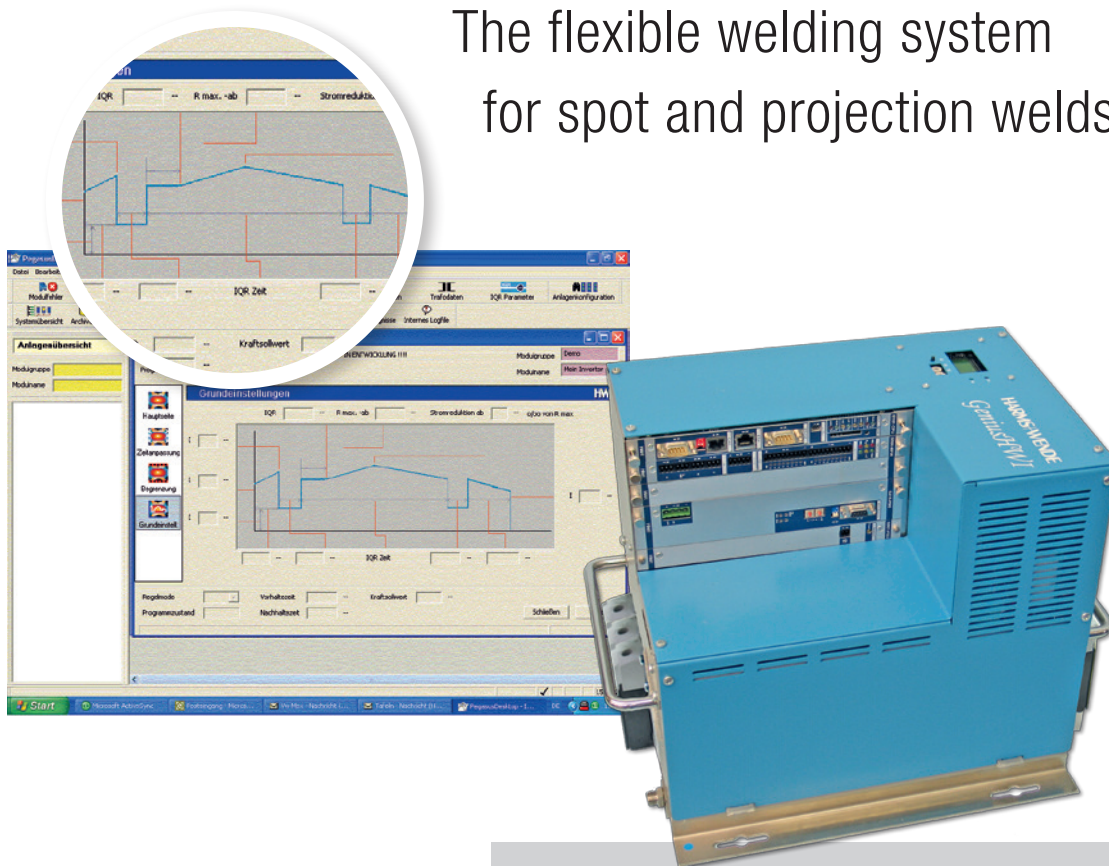


MEDIUM FREQUENCY WELDING SYSTEMS

GeniusHWI



The flexible welding system
for spot and projection welds



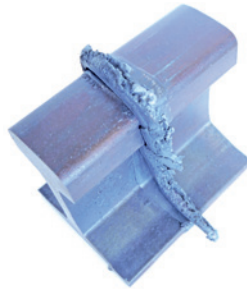
PERFORMANCE

Our medium-frequency inverter series GeniusHWI is designed for manual or automated systems and outfitted with maximum functionality. Extensive monitoring and allow control functions an optimized and secure welding process. Due to the range of power units also aluminum can be spot welded.

FEATURES

- Individual equipment and customizable functions (Basic, Professional, Hand)
- Max. output current from 400 A to 3500 A (higher currents through Master-Slave connection)
- 3 weld times (preheating, main current and post-hold time)
- Monitoring of displacement, force, current, voltage and regulation limit
- Constant Current Regulation (secondary)
- Adaptive welding package IQR (optional)
- Visualization of the last 10 welds
- Operation through PC running XPegasus software ... and much more

Resistance welding for industrial applications



APPLICATIONS

- Spot welding with constant current regulation
- Adaptive feedback welding (option) for steel materials
- Classic Aluminum Mode CAM for aluminium alloys (typ 5000/6000)
- Projection welds
- Master-Slave setups with up to eight inverters

BENEFITS

- Best weld quality grace to fast regulator
- Automatic calibration of the regulator
- Short commissioning time
- Quality assurance routines
- Effetive production processes
- Competitive production processes
- Efficient data processing and -backup

TECHNICAL DATA

	GeniusHWI Basic	GeniusHWI Professional	GeniusHWI Hand
Operation	Windows based PC with <i>XPegasus</i> software		
Schedules	256	512*)	4
Weld profile	3 times VWZ, HSZ, NWZ ¹		
Max output current	400 to 3500 A		
Mains supply	400 V - 440 V oder 480 V, 690 V		
Cooling	air or water		
Upslope	Yes		
Downslope	Yes		
Impulses	Yes		
Digital IO	24-V-IOs		
Optional interfaces	Profibus -DP electrical, Profinet electrical, Profinet optical, EtherCAT, EtherNet/IP, CANOpen, CCLink, DeviceNet		
Electrode management	Yes		
Proportional valve	Yes		
Limit monitoring current	Yes		
S-Inspektor (displacement)	Yes	Yes	No
F-Inspektor (force)	No	Yes	No
I-Inspektor (current)	No	Yes	Yes
U-Inspektor (voltage)	No	Yes	Yes
R-Inspektor (resistance)	Optional	Yes	Optional
H-Inspektor (regulation limit)	No	Yes	No
SP-Inspektor (splatter)	Yes		
Constant Current Regulation (secondary)	Yes		
IQR (Adaptive feedback package)	Yes		
SP-Inspektor (splatter)	Yes		
IQR (Adaptive control)	Optional	Optional	Yes
PQS ^{weld} (ready)	Optional		
PQS ^{weld} on board	Optional		
CAM (Classic Alu Mode)	Optional		
QI-Inspektor (Quality inspector)	Optional		
BD-Documentation (component trace)	Optional		

¹ Pre-heat, Main current and post-heat
*) Option: 1024 schedules possible



GeniusHWI – the flexible inverter consists of a compact power unit with slot based control unit. The CPU and welding board are the core of the Genius system.